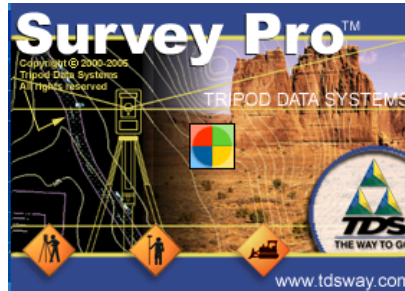


## Iowa DOT RTN Network Settings for Trimble TSC2 running Survey Pro Software V. 4.7



**If you are not up to date with your current version of Survey Pro or have questions concerning configuration please contact.**

**Bob Hughes  
Precision Midwest  
515-313-6748**

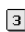

[hughes@precisionmidwest.com](mailto:hughes@precisionmidwest.com)

### **US Cellular Network Dial-up Settings**

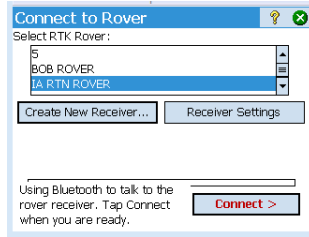
The following settings apply for Windows Mobile 5 operating systems.

|                     |                           |
|---------------------|---------------------------|
| User name           | 10 Digit Phone #@uscc.net |
| Password            | 10 digit phone #          |
| APN                 | None                      |
| Modem pin           | 9999                      |
| Name for connection | Bluetooth                 |
| Phone number        | #777                      |

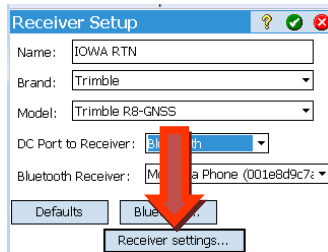
### **Rover Setup for Survey Pro**

The first thing you will need to do is open a job. Once you are in your main screen tab  Survey and then  Rover Setup . You will then be in the “Connect to Rover” screen. Select





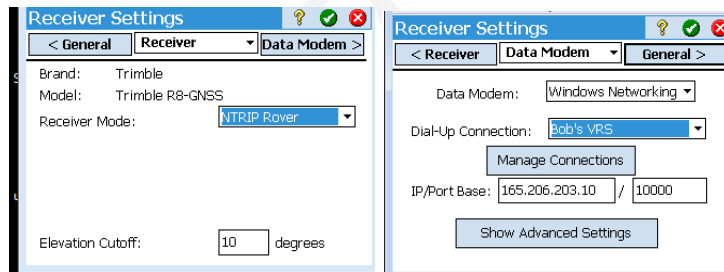
Now name your rover whatever. Here we name ours “Iowa RTN” and define our rover as a Trimble R8 GNSS connected through Bluetooth and define our connection. I assume you have already made your Bluetooth connection to your rover.



In the “Receiver Settings” section you will designate your receiver as an **NTRIP Rover**

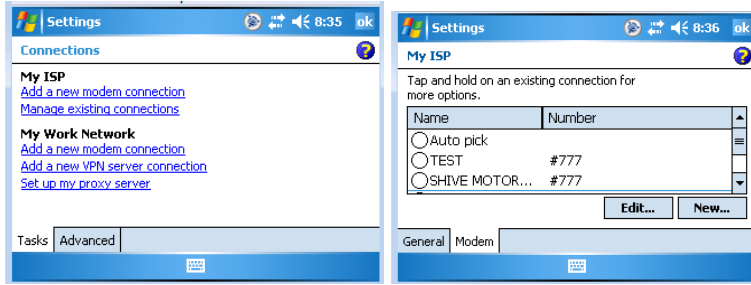
Next you will switch to the **Data Modem** tab to type in your IP Address/Port and create your Bluetooth connection to your internet connection.

To create your Bluetooth connection to your phone tab **Manage Connections**

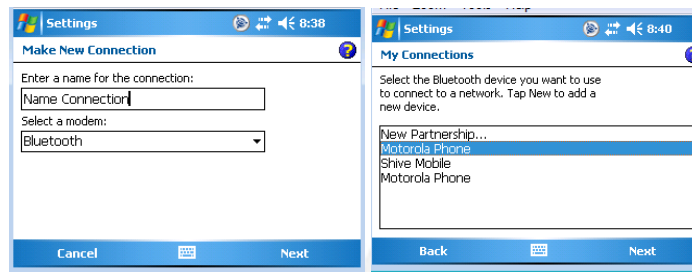


This brings you out to your Windows Mobile 5 settings. Tab “Manage Existing Connections” under the MY ISP section.

Select **New...**



1. You are now configuring your Bluetooth connection. Name your connection and if using Bluetooth select it for your modem.
2. When making a new Bluetooth connection make sure your phone is “visible”, this can be found in the settings section of the phone.
3. The controller and phone will prompt you to create a secure code. Type a code you will remember.



**NOTE:** It is strongly recommended to create a new Network Connection for each different modem.

3. Depending on your cell provider your dial string, username and password will be different. (our example will be US Cellular).

Dial string is #777

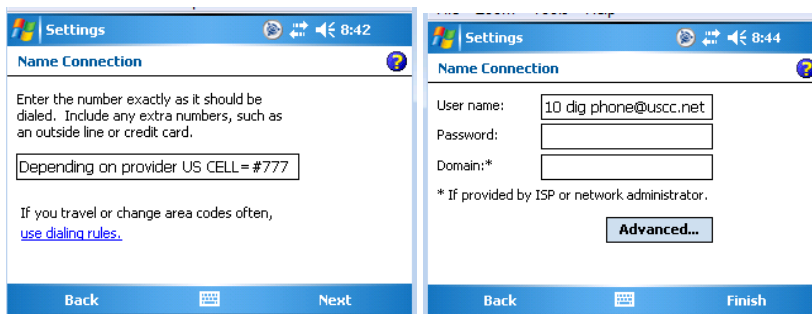
Username is the 10 digit phone number for YOUR phone @uscc.net


EXAMPLE: [5152338989@uscc.net](mailto:5152338989@uscc.net)

Password is the same phone #: 5152338989

No domain is needed

4. Select Finish.



Select your  until you exit and **B** Start GPS Survey  
You are now ready to connect.

When you connect you will be prompted for your username and password. Make sure to store or remember your password from the Iowa DOT.

Connect using RTCM 3.1 I-MAX option.