

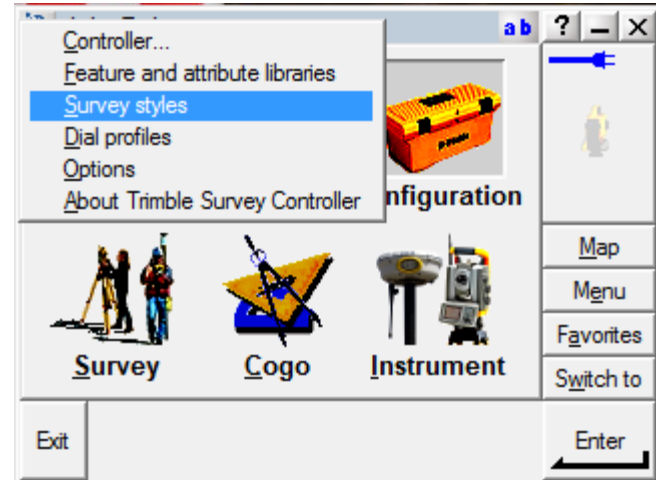
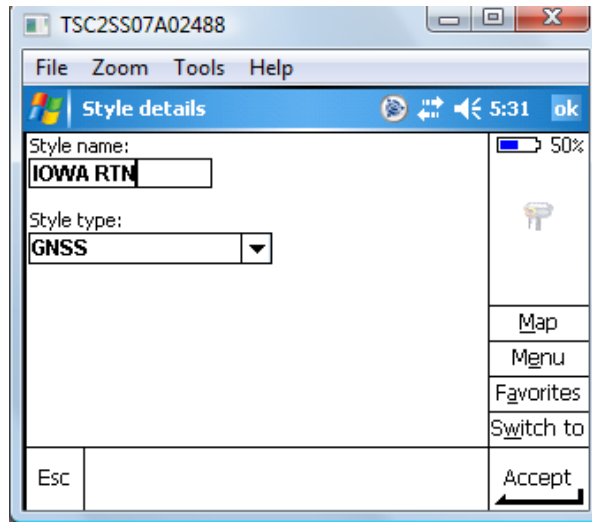
Create Your Trimble Iowa RTN Network Connection V. 12.44

Bob Hughes



Create New Style

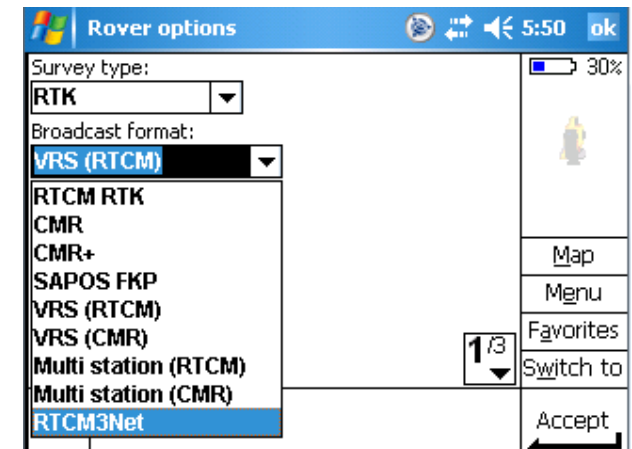
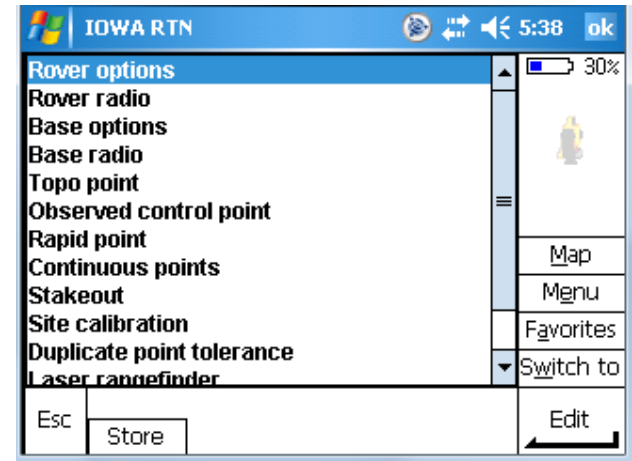
- Configuration
 - Survey Style
 - New: IOWA RTN



Iowa RTN: Rover Options

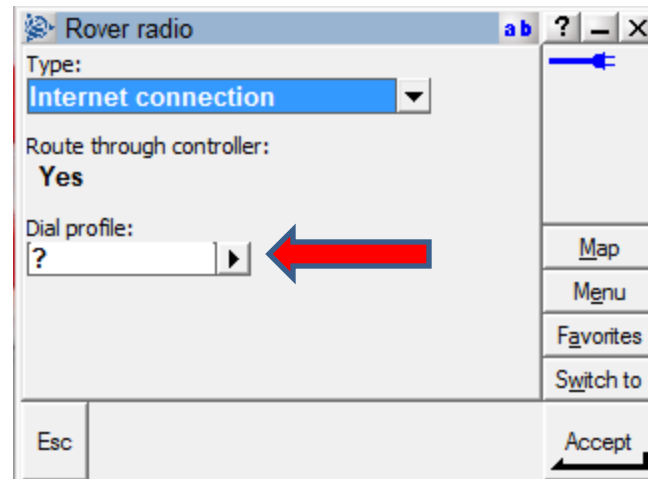
- Rover Options
 - Survey Type: RTK
 - Broadcast Format:
 - VRS (RTCM) (iMAX RTCM 3.0 or 2.3 if using a 5700 or 5800)
 - Store points as “positions”

– ALL OTHER SETTINGS IN ROVER OPTIONS TO USER SPECS



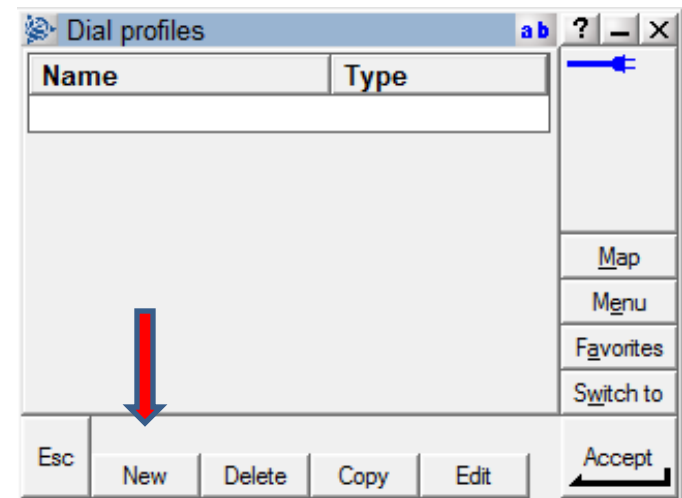
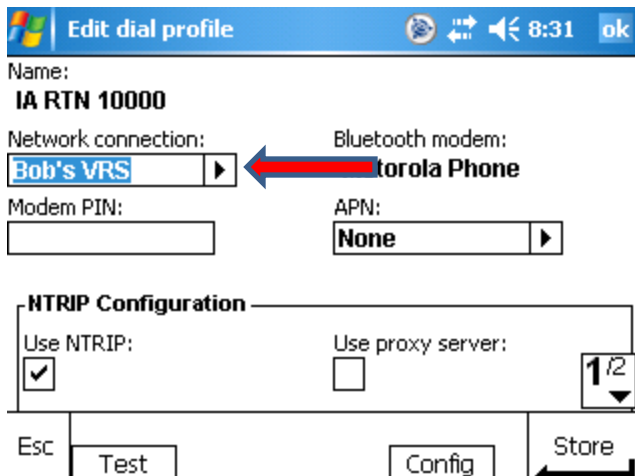
Iowa RTN: Rover Radio

- Type: Internet Connection
- Route through Controller: Yes
- Dial Profile:
 - Create New
 - Select arrow



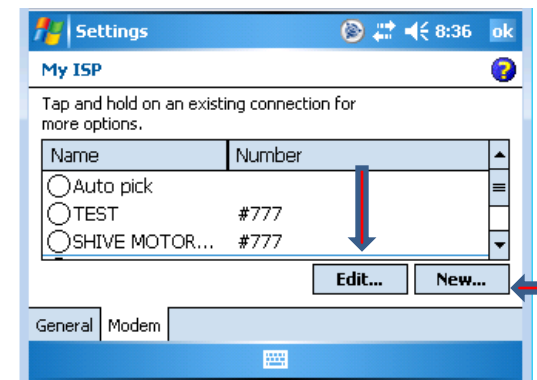
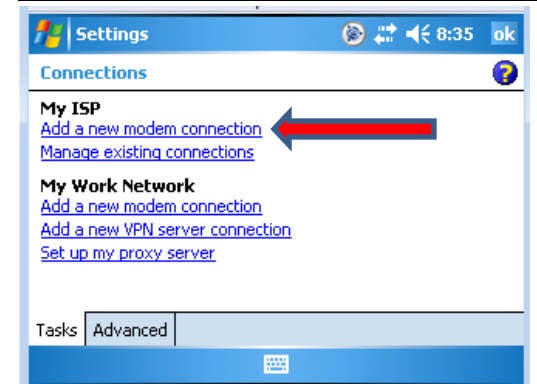
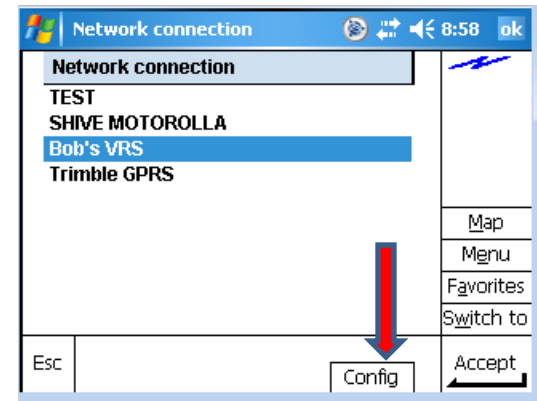
Iowa RTN: Dial Profiles

- **New**
 - (bottom left of screen)
- **Network Connection: This option Creates Connection to 'Cell Modem'**



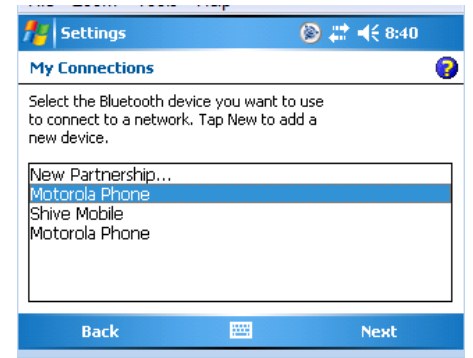
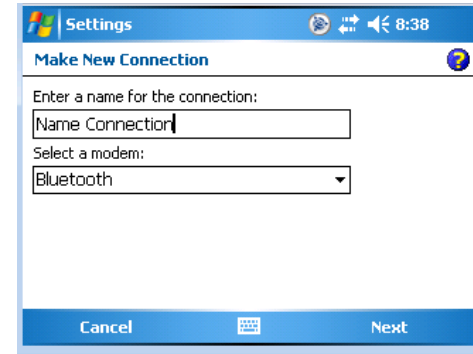
Dial Profile

- If existing use: Current
- If new: select 'Config' on bottom right of screen
- Brings to Connections
 - Click "Manage Existing Connections"
- Select Existing or create "New..."



Dial Profile

- Name your connection
 - Select “bluetooth” for modem
- Create bluetooth connection
 - Identify existing or create “new partnership”
 - When you scan for new connection make sure phone is “visible”
 - This can be found in phone bluetooth settings.
 - Will ask if device is trusted and to select a secure code
 - 1234
 - 9999
 - Or skip



Settings: New Partnership for Phone

- US Cellular
 - Dial #777
 - User Name: your 10 digit phone number 1234567890@uscc.net
 - Password: your 10 digit phone number 1234567890
- Other networks – contact provider
- Select 'Finish'

Settings 8:42

Name Connection

Enter the number exactly as it should be dialed. Include any extra numbers, such as an outside line or credit card.

If you travel or change area codes often, [use dialing rules.](#)

Back Next

Settings 8:44

Name Connection

User name:

Password:

Domain:*

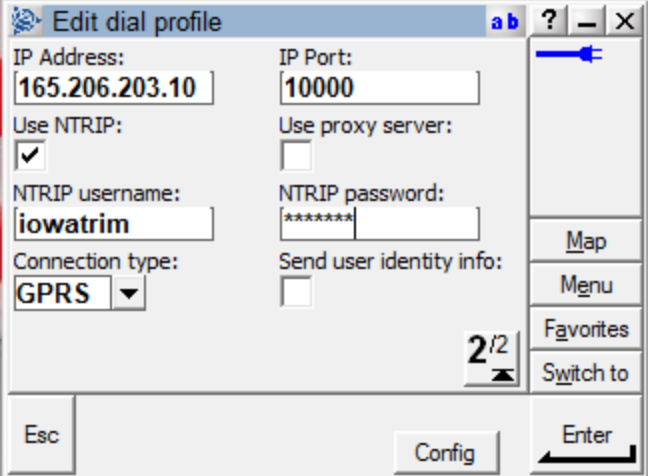
* If provided by ISP or network administrator.

Advanced...

Back Finish

Edit Dial Profile (1 of 2)

- Modem Pin: Blank
- APN: None
- IP Address: 165.206.203.10
- IP Port: 10000
- Check 'Use NTRIP'
- Go to page 2



The screenshot shows a dialog box titled "Edit dial profile" with the following fields and controls:

IP Address: 165.206.203.10	IP Port: 10000
Use NTRIP: <input checked="" type="checkbox"/>	Use proxy server: <input type="checkbox"/>
NTRIP username: iowatrim	NTRIP password: *****
Connection type: GPRS	Send user identity info: <input type="checkbox"/>

Navigation and status elements include: "Map", "Menu", "Favorites", "Switch to", "2/2" (page indicator), "Esc", "Config", and "Enter" buttons.

Edit Dial Profile (2 of 2)

- Use Proxy Server: unchecked
- NTRIP User Name: Given by Iowa DOT
- NTRIP Password: Given by Iowa DOT
- Connection Type: GPRS
- Send User Identity Info: unchecked
- Select 'Store'
- Select 'Accept' twice
- Select 'Store' again

The screenshot shows a dialog box titled "Edit dial profile" with the following fields and options:

IP Address:	165.206.203.10	IP Port:	10000
Use NTRIP:	<input checked="" type="checkbox"/>	Use proxy server:	<input type="checkbox"/>
NTRIP username:	iowatrim	NTRIP password:	*****
Connection type:	GPRS	Send user identity info:	<input type="checkbox"/>

Buttons: Esc, Config, Enter

Sidebar: Map, Menu, Favorites, Switch to

Questions?

Contact

Bob Hughes-Precision Midwest-Central/Western Iowa

515-313-6748

Hughes@precisionmidwest.com

Todd Sleezer-Precision Midwest Eastern Iowa

Todd_sleezer@precisionmidwest.com

Follow link below for Version 12.44

http://trimble.com/tsc_ts.asp?Nav=Collection-46260

