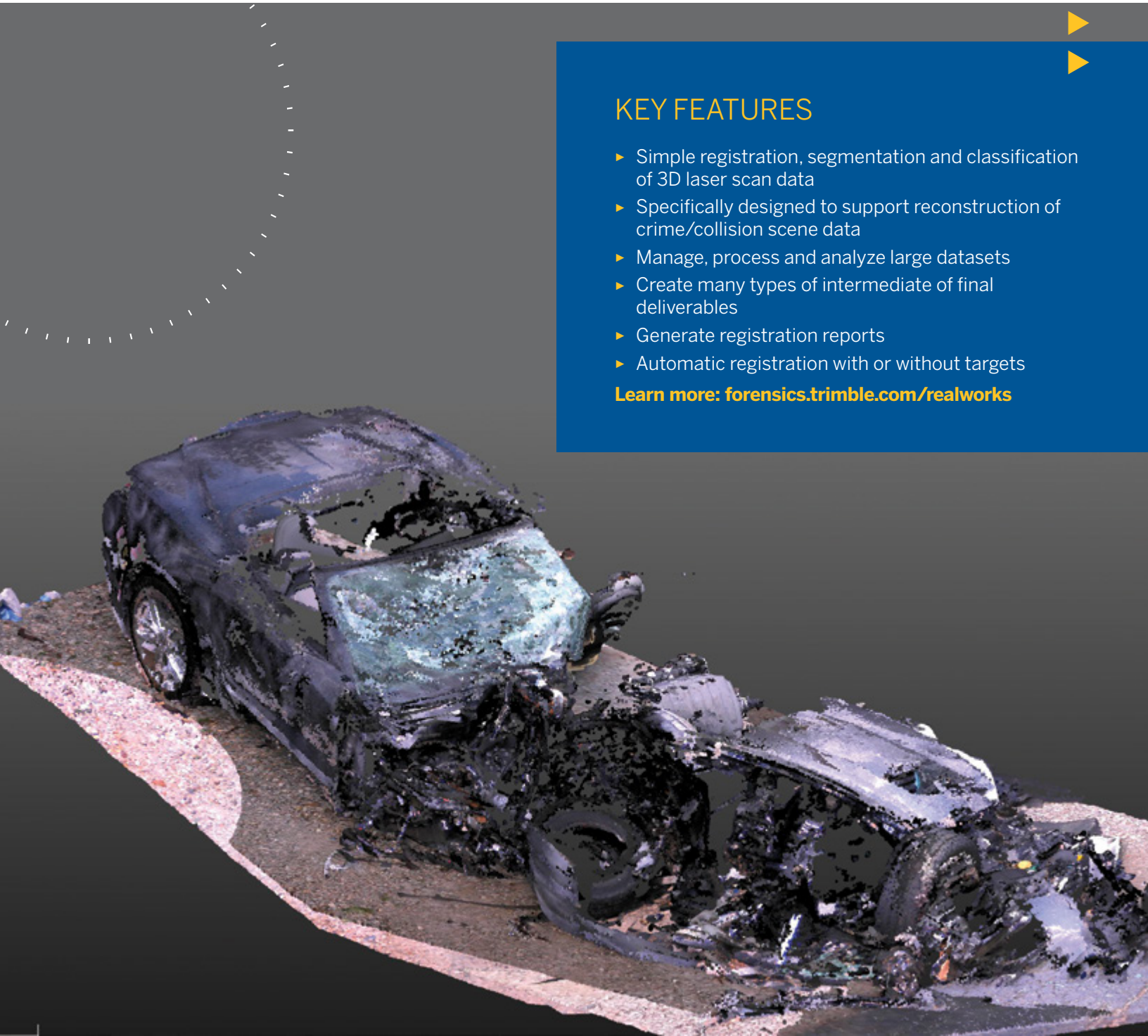




Trimble RealWorks Forensics

OFFICE SOFTWARE

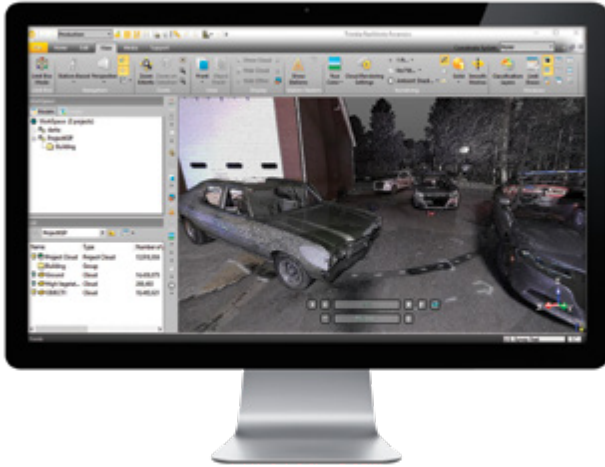


KEY FEATURES

- ▶ Simple registration, segmentation and classification of 3D laser scan data
- ▶ Specifically designed to support reconstruction of crime/collision scene data
- ▶ Manage, process and analyze large datasets
- ▶ Create many types of intermediate or final deliverables
- ▶ Generate registration reports
- ▶ Automatic registration with or without targets

Learn more: forensics.trimble.com/realworks

Trimble® RealWorks® Forensics OFFICE SOFTWARE



SYSTEM REQUIREMENTS

Operating System

- ▶ Microsoft® Windows® 7, 8 or 10 – 64-bit
- ▶ **Processor:** minimum 2.8 Ghz (Quad-Core) or higher, (Intel quad core with Hyper-Threading support strongly recommended)
- ▶ **RAM:** minimum 8 GB (16 GB and higher recommended)*
- ▶ **VGA card:** OpenGL 3.2 compatible with minimum 1 GB VRAM (3GB or higher recommended)
- ▶ 3-button mouse

Other Requirements

- ▶ Solid State Drive (SSD) for maximum performance (pref. 256 GB) – strongly recommended.

SUPPORTED LANGUAGES

- ▶ Chinese Simplified
- ▶ German
- ▶ Russian (optional)
- ▶ English
- ▶ Italian
- ▶ Spanish
- ▶ Finnish
- ▶ Japanese
- ▶ French
- ▶ Korean

* The amount of available RAM will directly affect your ability to open all points of a large data-set in a reasonable amount of time. See the following suggested maximum point load limits acc. to available RAM:

- 8 GB – 250 million
- 16 GB – 500 million
- 24 GB – 750 million
- 32 GB – 1 billion
- 64 GB – 2 billion

Note: larger amounts of data may take progressively longer to open.

Contact your local Trimble Authorized Distribution Partner for more information

NORTH AMERICA
Trimble Inc.
10368 Westmoor Dr
Westminster CO
80021
USA

EUROPE
Trimble Germany
GmbH
Am Prime Parc 11
65479 Raunheim
GERMANY

ASIA-PACIFIC
Trimble Navigation
Singapore PTE Limited
3 HarbourFront Place
#13-02 HarbourFront Tower Two
Singapore 099254
SINGAPORE